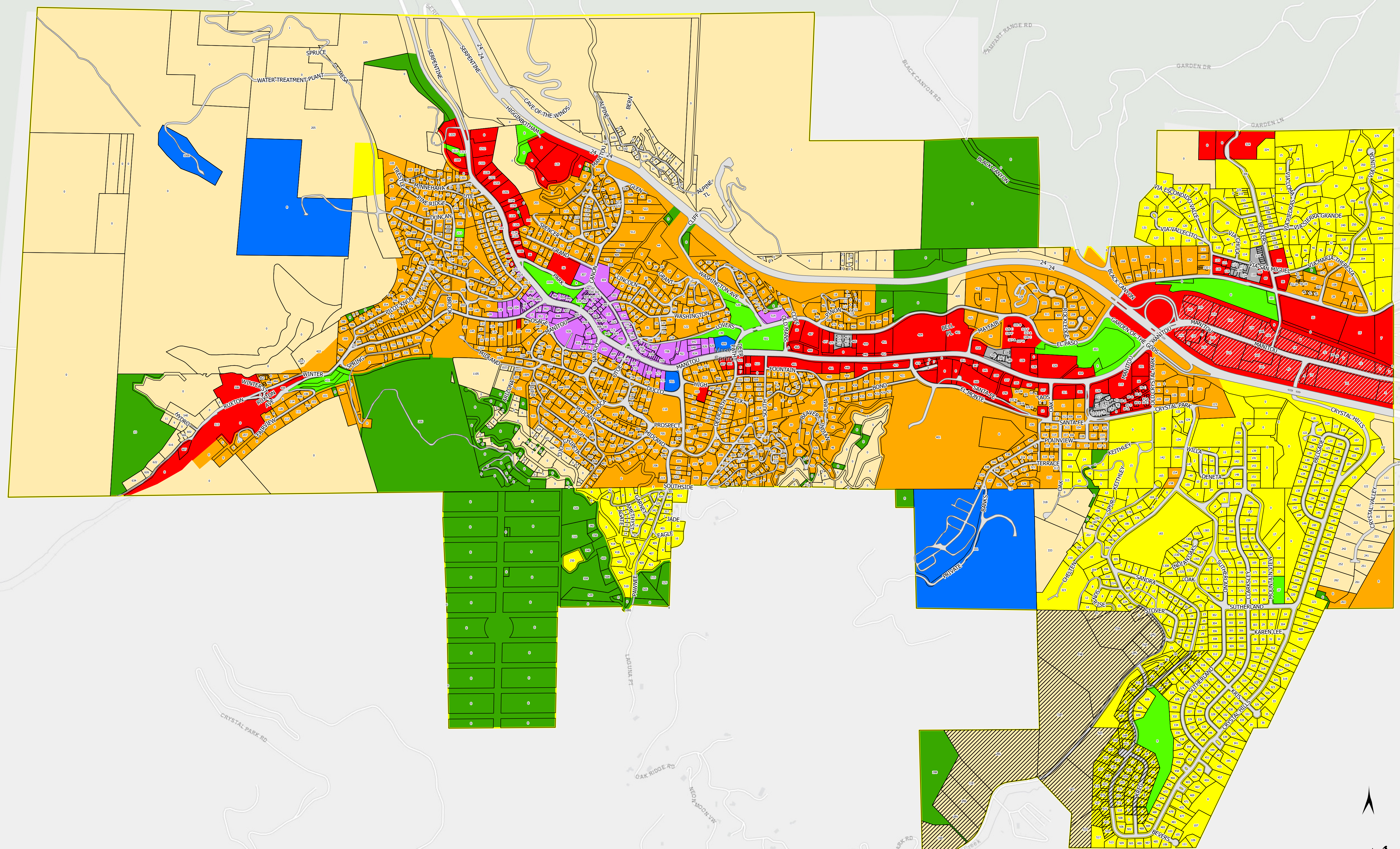


City of Manitou Springs Official Zoning Map

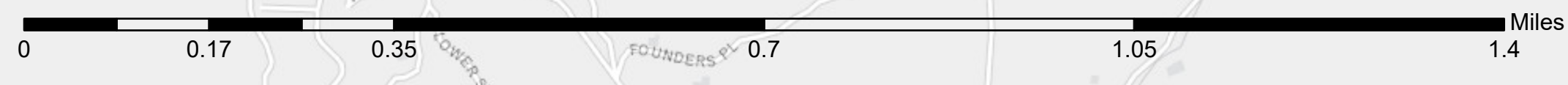


Legend

- Parcel Boundary
- Municipal Boundary
- Zoning**
- Commercial
- Downtown
- General Residential
- High Density Residential
- Hillside/Low Density Residential
- Low Density Residential
- Open Space
- Park
- Public Facilities
- Overlay Zone

See Modifications to Standard Zoning Regulations per ORD 678

Spatial Reference
 Name: WGS 1984 Web Mercator Auxiliary Sphere
 PCS: WGS 1984 Web Mercator Auxiliary Sphere
 GCS: GCS WGS 1984
 Datum: WGS 1984
 Projection: Mercator Auxiliary Sphere
 Central Meridian: 0.0000
 Latitude of Origin: 0.0000
 Longitude of Origin: 0.0000
 Latitude of Center: 0.0000
 Longitude of Center: 0.0000
 Latitude of 1st: 0.0000
 Longitude of 1st: 0.0000
 Latitude of 2nd: 0.0000
 Longitude of 2nd: 0.0000
 False Easting: 0.0000



Bureau of Land Management, Esri, HERE, Garmin, INCREMENT P, Intermap, USGS, EPA, Esri, HERE

X _____
 Planning Director Date

Map Created: December 17, 2021

